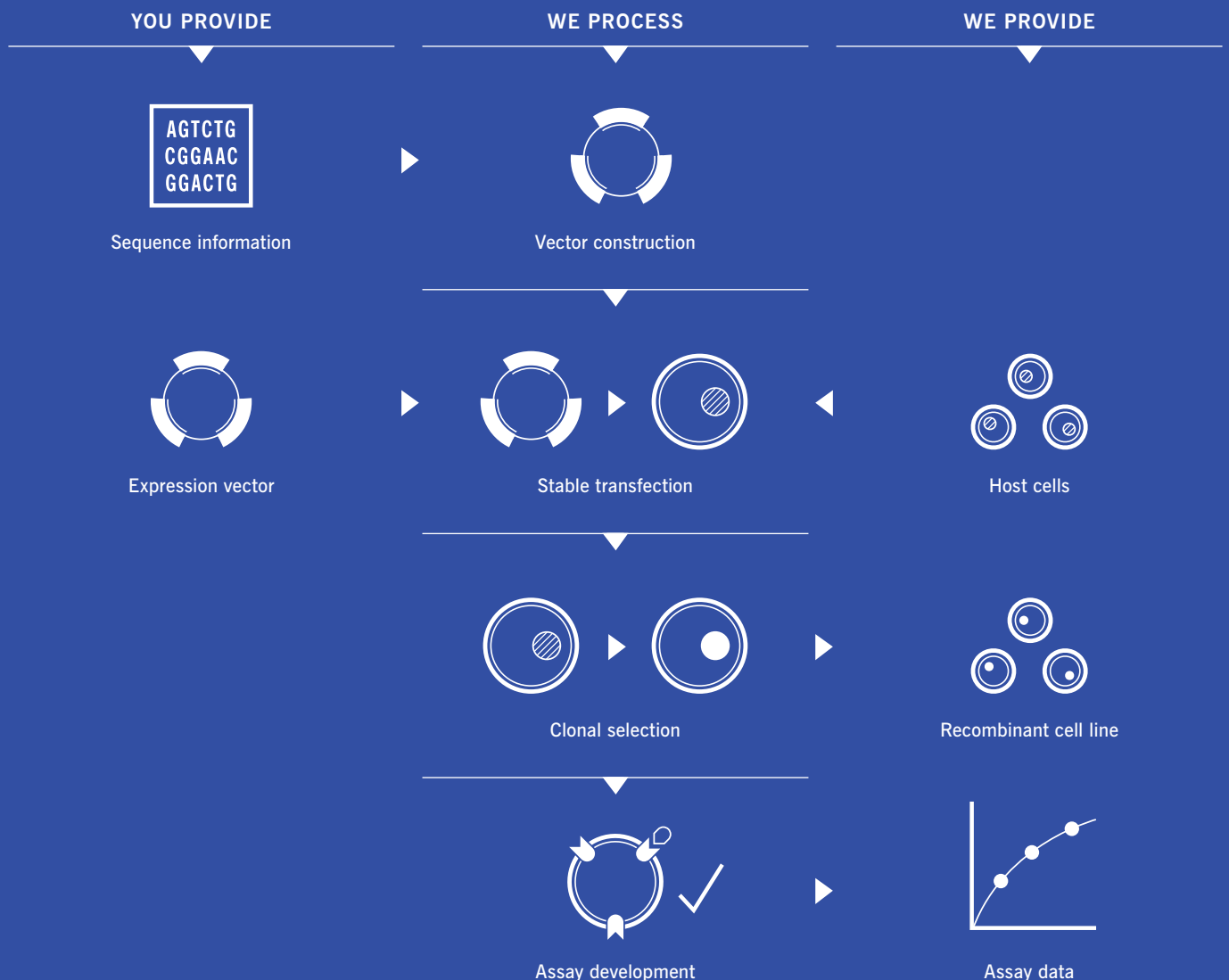


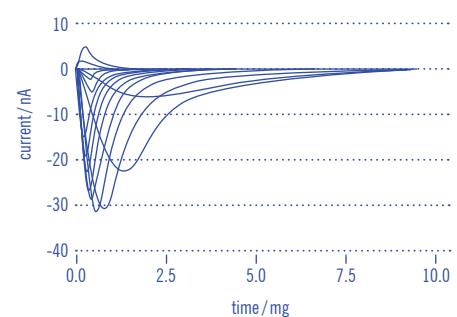
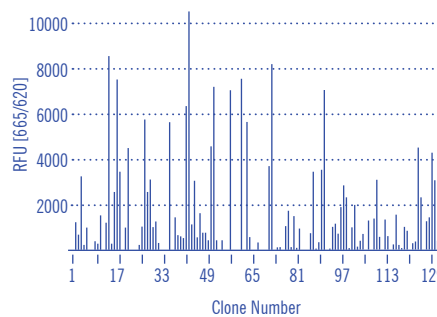
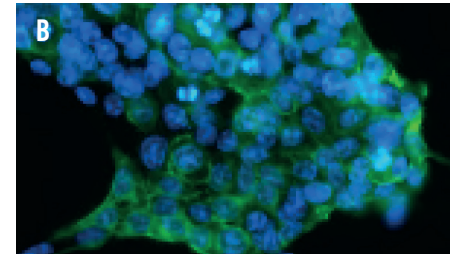
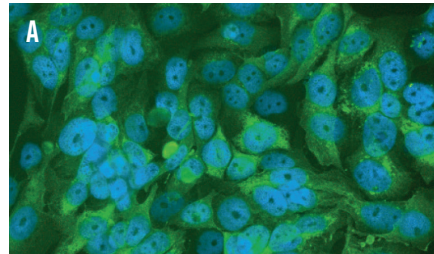
# CELL LINE GENERATION

- ▶ Broad range of target expression levels
- ▶ Highly stable clones
- ▶ Coexpression of multiple subunits
- ▶ Functionally validated in cell based assays



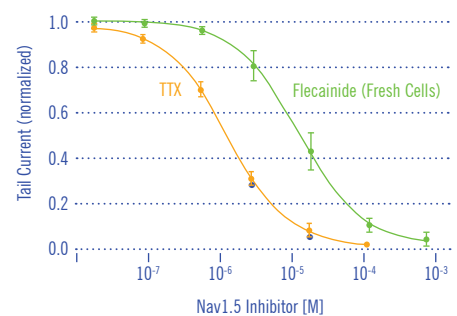
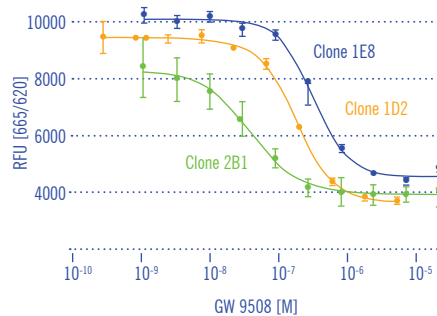
**CELL LINE GENERATION**

- ▶ Custom expression strategies and vector construction
- ▶ Constitutive or inducible target expression
- ▶ Target or reporter gene expression
- ▶ Polycistronic or independent co-expression of auxiliary factors, multiple subunits and resistance markers



**TARGET CLASSES**

- ▶ GPCR's
- ▶ Ion Channels
- ▶ Transporters
- ▶ NHR's
- ▶ Kinases
- ▶ Proteases
- ▶ Other Enzymes
- ▶ Structural Proteins
- ▶ Regulatory Proteins
- ▶ Reporter Proteins



**HOST CELL LINES**

HEK, U2-OS, PC12, SK-N-MC, A549, MCF-7, HepG2, THP-1, PC3, LnCAP, HT-1080, R1610, NCI-1975, AsPC1, CHO, V79, BHK, L-929, Ba/F3, MDCK, COS7, Sf9 and many more

A: CHO-K1 cell were transfected with an expression vector for free fatty acid receptor GPR40. Selected clones were screened and validated by IP-One HTRF® assay (Cisbio).

B: CHO-K1 cells were transfected with an expression vector for voltage gates sodium channel Nav1.5. Isolated clones were screened for target expression by immunofluorescence labeling and further validated by automated patch clamp.

*Evotec Cell Culture Services*

- ▶ Over ten years of experience in custom cell, membrane and protein production
- ▶ Direct communication with project scientists and full access to raw data
- ▶ Reagent production services can be accessed as a standalone function or as integral part of wider collaborative programmes
- ▶ Cell bank management scheme, establishing, propagating, backup storage and distribution of customers cell lines between subsidiaries or partners worldwide