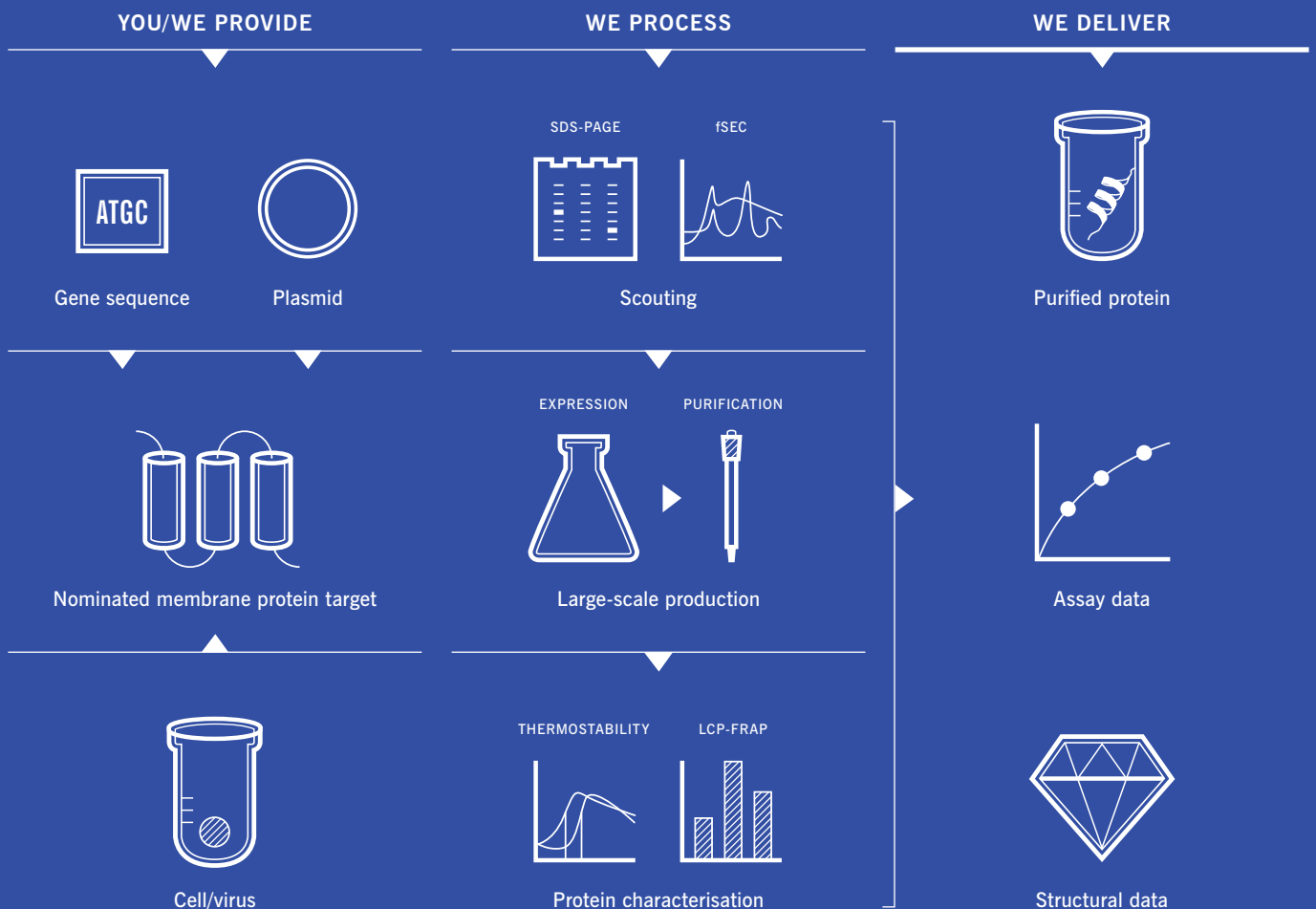


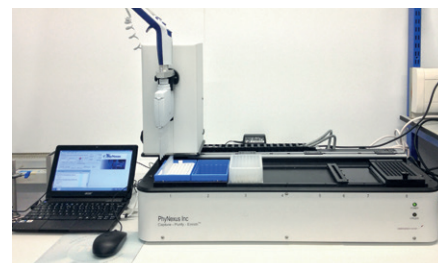
STRUCTURAL BIOLOGY OF MEMBRANE PROTEINS

- ▶ Established gene to structure platform
- ▶ Efficient high-throughput screening workflow
- ▶ Ligand binding assay for QC and characterisation
- ▶ Rapid access to facilities at Diamond light source, UK



HIGH-THROUGHPUT SCREENING WORKFLOW

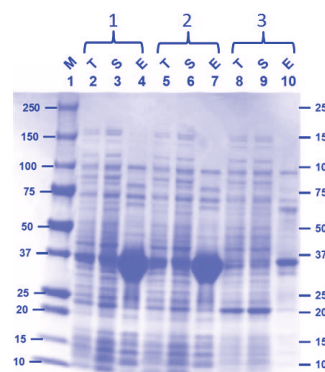
- ▶ Fluorescence based SEC screening
- ▶ Automated micro-scale affinity purification (Phynexus™)
- ▶ Thermofluor based stability assay
- ▶ Radio-ligand binding assay on membrane bound and solubilised sample
- ▶ LCP-FRAP & *In-situ* screening through Diamond Light Source, UK



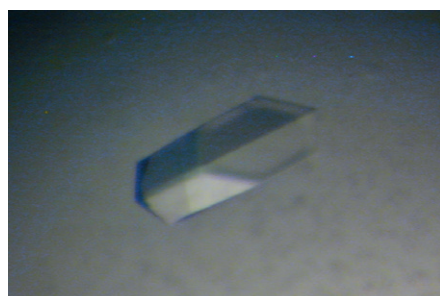
Phynexus™

LARGE-SCALE PROTEIN PRODUCTION & CRYSTALLISATION

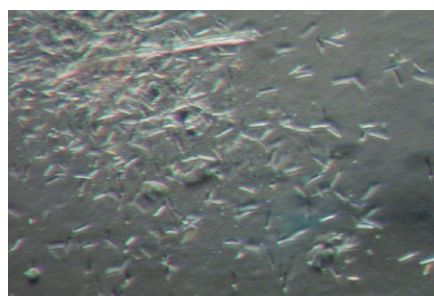
- ▶ Heterologous expression in mammalian, insect, yeast and bacterial systems
- ▶ Enriched membrane preparation
- ▶ Large-scale purification for crystal grade protein
- ▶ Pharmacological and biophysical analysis for characterisation of proteins
- ▶ Crystallisation in lipid cubic phase (LCP), bicelles and vapour diffusion



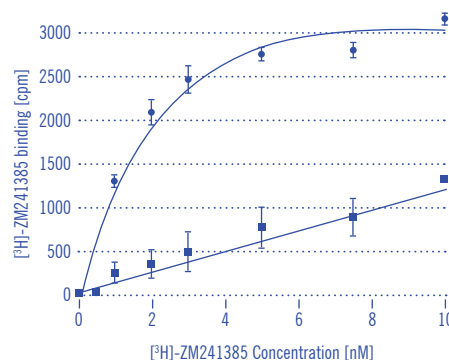
Target scouting



Membrane protein crystals in vapour diffusion



Membrane protein crystals in LCP



Evotec Protein Production Services

- ▶ *Highly experienced team and state-of-the-art technology platform for membrane protein production, isotope-labeled protein preparation, high throughput protein purification and structural biology services*
- ▶ *Direct communication with project scientists and full access to raw data*
- ▶ *Reagent production services can be accessed as a standalone function or as integral part of wider collaborative programmes*
- ▶ *Links to key academic groups from Oxford University & Diamond light source, UK*