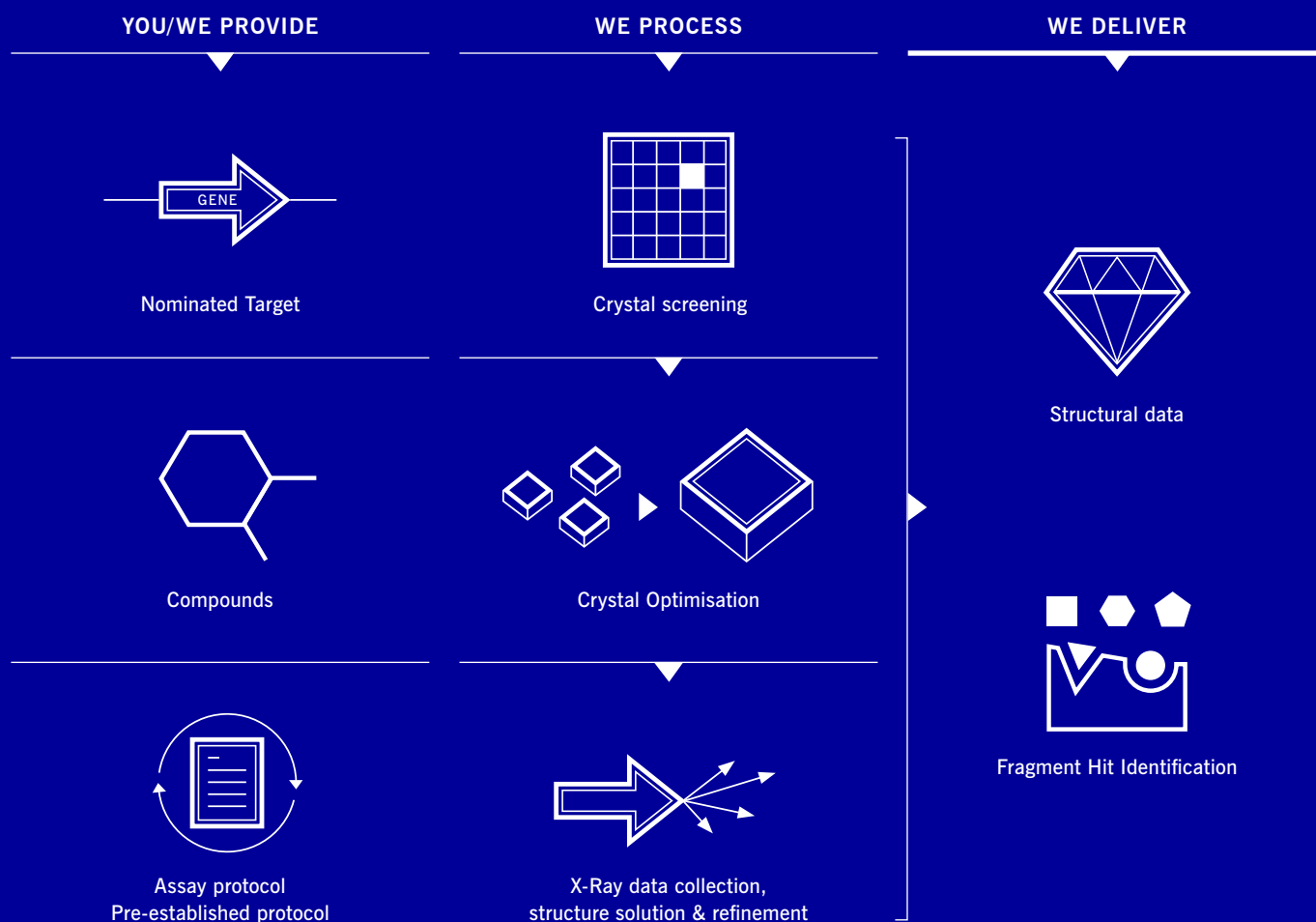


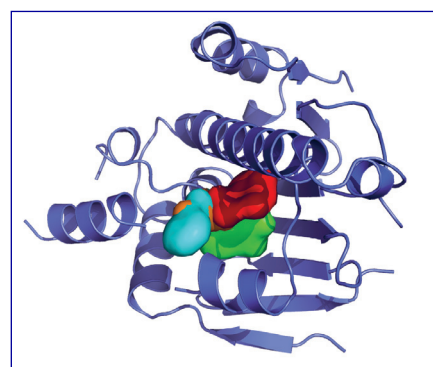
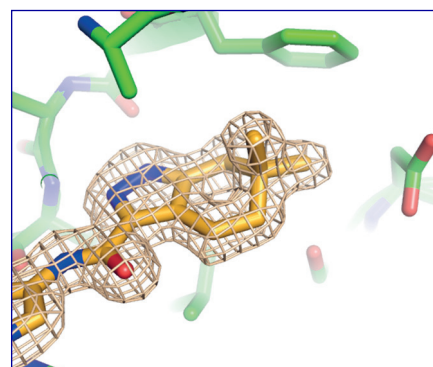
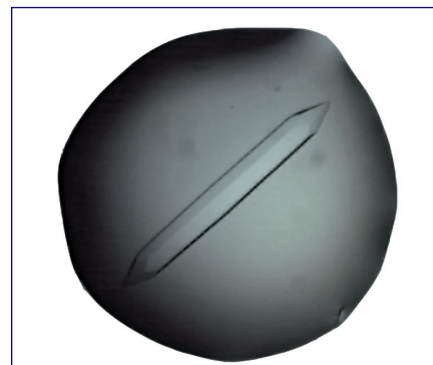
# STRUCTURAL BIOLOGY SERVICES

- ▶ Rapid gene-to-structure process & versatile protein production
- ▶ Novel structure elucidation & optimisation of crystal systems
- ▶ Experience with major target families including membrane proteins
- ▶ Rapid access to facilities at Diamond light source, UK
- ▶ X-ray based fragment screening & Biophysical compound profiling



## EVOTEC STRUCTURAL BIOLOGY PLATFORM

- ▶ Dedicated team of 11 PhD crystallographers supported by specialist protein production unit established for more than 10 years
- ▶ *De novo* structure and efficient literature repeat.
- ▶ Specialists in construct design and developing new crystal systems
- ▶ Access to Diamond light Source located <5 miles from Evotec and access to other synchrotrons to rapidly obtain the best quality data
- ▶ >200 crystal structures per year
- ▶ Rapid cycle time: Less than 2 weeks for soaked systems and fast entry into ligand co-crystallisation trials



## EXPERIENCED WITH MULTIPLE PROTEIN CLASSES

- ▶ Kinases
- ▶ Proteases
- ▶ Protein-protein complexes
- ▶ Integral membrane proteins
- ▶ Mitochondrial proteins
- ▶ Secreted proteins
- ▶ Metabolic enzymes
- ▶ Cell surface receptors
- ▶ Protein-DNA complexes
- ▶ Epigenetic proteins
- ▶ And more ...

## HIT IDENTIFICATION & COMPOUND PROFILING

- ▶ Structure-based fragment screening: high-throughput, automated data collection, identify leads which are structure-enabled for design
- ▶ Biophysical compound profiling: comprehensive biophysical and biochemical screening/assay tools including ITC & DSF

## *Evotec Structural Biology Services*

- ▶ *Evotec Structural Biology Services can be accessed for fee-for-services project or as part as integrated programmes*
- ▶ *Off-the-shelf crystal systems available upon request*

*For more information, please contact us at [info@evotec.com](mailto:info@evotec.com)*